

Gateshead LINK Annual Event 2010



Involving Local People in
Health and Social Care

Welcome

- Today we are going to offer information on what the LINk has been up to this year.
- And how Gateshead LINk should transform into HealthWatch under the Governments new rules.



The job of the LINk?

- The job of your LINk is to find out what people like and dislike about local Health, and Social Care Services, and to work with people who plan and run them to help make them better.



Hello from the staff

Richard Jenks - LINK Coordinator

Kim Newton – Engagement and Involvement

Ruth Dodds – Information

Linda Thompson – Administration

George Holland – Admin support

Steering Group 2009/10

Elected Steering Group Members:

Alan Davison	Age Concern
Ethel Donnelly	Resident
Julie Hope	Resident
Gretel Keadell	Resident
Kay Parker	Resident
Christine Squires	Resident
Dave Wallace	Resident

The Steering Group would like to
thank



Our Host GVOOC



PROMOTING VOLUNTARY ACTION IN GATESHEAD

Company Registration Number: 7302622
Registered Charity Number: 1137389

Co-opted Steering Group Members: (LINK members)

Bill Llewellyn

Resident

Anya Simpson

Development Worker, Gateshead
Mental Health User
Forum

Maria Hall

Resident

And.....

Co-opted Steering Group Members: (partner organisations)

Co-opted Steering Group Members: (partner organisations)

Lucia Hiden	Gateshead NHS Foundation Trust Involvement Lead
Susan Joyce	Learning & Change Lead Provider Services NHS SOTW
Andi Parker	Gateshead Council Involvement Officer
Norah Stevens	PCT Public Involvement Gateshead Locality Lead

And your proposed Steering Group
for 2010/11

Is



Anthony Atkinson

Anthony is currently an Independent Member of NHS SOTW Provider Board, having previously been Audit Committee Chair of Gateshead PCT.

He is also a Social Policy Campaigner with Gateshead CAB.

And was previously a Member of Northumbria Police Authority and a Gateshead Magistrate for 9 and 12 years respectively; I have also served as a Trustee with Gateshead Crossroads.

Ethel Donnelly

Ethel is a retired college lecturer with many years experience of working with students who have learning difficulties, including helping them with their social, legal and health problems.

Ethel is particularly interested in people who are socially isolated and has completed research on this subject.

Glenys Goodwill

Glenys wants to find out more about the Health White Paper and what these proposals will mean, and hopefully improving the plans. She is an ex carer for her mother and father.

She is also a member of the local patient's forum and Safe Care at the Queen Elizabeth hospital.

Maria Hall

Maria has a wide and varied involvement in Health and Local Care issues from a service point of view, ranging from children through to older people. Her special interest is Special Educational Needs, Learning Disabilities and their Carers and Transition into Adult Services.

She has previous experience of the Mental Health Service, Learning Disability and Older People's service which she has gained from working as a carer for the past twenty years.

She is a Peer Mentor and is the Chair of Governors at Cedars School.

Maria is a trained Enter and View Representative for LINk.

She is also an active member of the LINk working groups.

Andrew Mitchell Heggie

Andrew has suffered a lot of illness in his life and feels that the NHS has always been there for him and would like to put something back into it.

He has worked as a checker at Caterpillar for 17 years and used to be the director of the flats in Brecken Beds Road.

Valerie Hodge

Valerie wants to get more involved in the delivery of Health Care in the borough to make sure that the people of Gateshead get the best possible service.

She has been involved in the Gateshead Foundation Trust since its inception.

She is a presiding chairperson sitting on the Gateshead Bench of Magistrates.

She is the Senior Governance and Assurance Manager within the Department of Working Pensions (DWP).

She has been a recent board member of The Gateshead Housing Company.

Gretel Keadell

Gretel has been involved in Gateshead LINK from the very beginning and was part of the Interim Steering Group who set up and developed LINK.

She is also a Volunteer Holistic Therapist at various hospitals in Gateshead.

Her main interest is fair provision of health and social services for all residents of Gateshead.

She is also an active member of the LINK working groups.

Bill Llewellyn

Bill has been involved in Gateshead LINK from the very beginning and was part of the Interim Steering Group who set up and developed LINK.

Bill's background is in Carers issues and he is in a Trustee and Treasurer of Gateshead Carers Association

He has over 35 yrs experience in Management

He wishes to continue the work with the Gateshead LINK so he can help advocate and bring forward issues on behalf of Carers.

He is also an active member of the LINK working groups.

Kay Parker

Kay has been involved in Gateshead LINK from the very beginning and was part of the Interim Steering Group who set up and developed LINK.

She is a retired social worker of 25 years, specialising in Mental Health and Carers.

She is a trained LINK Enter and View representative and is also a health volunteer with the Primary Care Trust.

She would like to continue to help improve good practice within Gateshead Health and Social Care and ensure the needs of local people are addressed.

She is also an active member of the LINK working groups.

Anya Simpson

Anya has spent most of her working life in health and social care

She has worked within front line assessment services as a qualified social worker in, for example child protection and mental health care in both NHS and Social Services

She has been an Advocate and is also a fully qualified Advice Worker having trained and worked with the National Association of Citizen Advice Bureaus for a number of year's in Gateshead. She has worked as a Mental Health Co-ordinator and led on the setting up of a new Mental Health Advice Service for South Tyneside Citizens Advice Bureau.

Anya is a trained Enter and View Representative for LINK. She is also an active member of the LINK working groups.

Christine Squires

Christine is an ex Chair of Patient and Public Involvement PCT Forum and attends various meetings in the voluntary sector to improve social care services for the people of Gateshead.

She has also been involved at a national level with the Department of Health on developing a toolkit for the RAS (Resource Allocation System).

She is also a Peer Mentor Co-ordinator which involves getting people who are on a Personal Budget to share their personal experience.

Dave Wallace

Dave has been involved in Gateshead LINK from the very beginning and was part of the Interim Steering Group who set up and developed LINK.

He is also an active member of the LINK working groups.

He is a volunteer for various organisations including Age UK, Active Age North East and Turning Point.

His particular interests are:

mental health, alcohol reduction, Improving Access to Psychological Therapies (IAPT) and dual diagnosis around mental health and alcohol.

Dave is a trained Enter and View Representative for LINK.

Steering Group 2010/11

Anthony Atkinson

Ethel Donnelly

Glenys Goodwill

Maria Hall

Andrew Mitchell Heggie

Valerie Hodge

Gretel Keadell

Bill Llewellyn

Kay Parker

Anya Simpson

Christine Squires

Dave Wallace



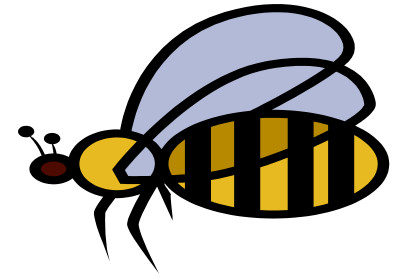
The newly elected Steering Group will Meet in December to decide who they would like to co-opt to the Group to progress future work.



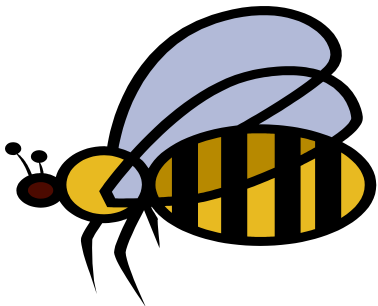
Gateshead

LINK

Involving Local People in
Health and Social Care



Now we would like to tell you
what we've been doing in the
last year



Our Second Annual Report

- You will find this in your delegate packs



Keeping in touch with our members

Quarterly newsletter - to all LINK members


Weekly e-bulletin to all of our members



Gateshead LINK Members e-bulletin
Week ending 12th March 2010

Gateshead **LINK** Website.....

Is now up and running to find out more or have your say on our on line blog visit
<http://www.gatesheadlink.org.uk/index.html>


 **Gateshead LINK would like to invite you to
A Rough Guide to Personalisation**

Are you still confused around personalisation?
Do you want to cut through the jargon?
Come along for an informal information session to
find out what it's all about in plain English!!!

Place:
GVOC, John Haswell House, 8/9 Gladstone Terrace, Gateshead, NE8 4DY

Date:
Tuesday 13th April 2010

Time: 10.30 - 1.00 including lunch
To book, log on to the website or ring Angie Maidment on 0191 4784103



New Website



Gateshead
LINK

Involving
Local People
in Health and
Social Care



www.gatesheadlink.org.uk

Representation

We have representation on the following boards and forums:

- Alcohol Harm Reduction Group
- Carers Partnership Board (Gateshead Council)
- Disability Partnership Board (Gateshead Council)
- Disabled Children's Forum (Gateshead Council)
- Francis Report board (Gateshead NHS foundation Trust)
- Gateshead Community Network
- Gateshead Involvement Forum (Gateshead Council)
- Health and Social Care Partnership Board (Gateshead Council)
- Joint Strategic Needs Assessment (Gateshead Council)
- Learning Disability Partnership Board (Gateshead Council)

- New Horizons in Mental Health (Gateshead Council)
- North East Ambulance Forum
- NHS South of Tyne and Wear (SOTW) Gateshead PCT Board
- Overview and Scrutiny Committee (Gateshead Council)
- Patient Carer and Public Involvement (Gateshead NHS foundation Trust)
- Patient User Involvement Forum (PCT)
- Primary Care Trust (PCT) Local Engagement Board
- Personalisation Partnership Board (Gateshead Council)
- Regional/National LINK
- Voluntary Sector Mental Health (GVOC)
- Workforce Development Group for Personalisation (Gateshead Council)

Consultations which include

- Adult Social Care
- Adaptations Policy
- Autism
- Care Quality Commission
- Child and Adolescent Mental health
- Commission on Child Poverty
- District Nursing
- Domiciliary Care
- Health Inequalities
- HealthWatch

- Marmot Review
- NHS White Paper
- National Institute for Clinical Excellence (NICE)
- Northumberland Tyne and Wear (NTW) Quality Accounts
- Older Peoples Strategy
- Pharmaceutical Needs
- Special Education
- Transforming Community Services

Enter and View

We now have trained enter and representatives who can carry out visits, when necessary to see if services are working well



Did you get all that !



We Need You !



Join your LINK today