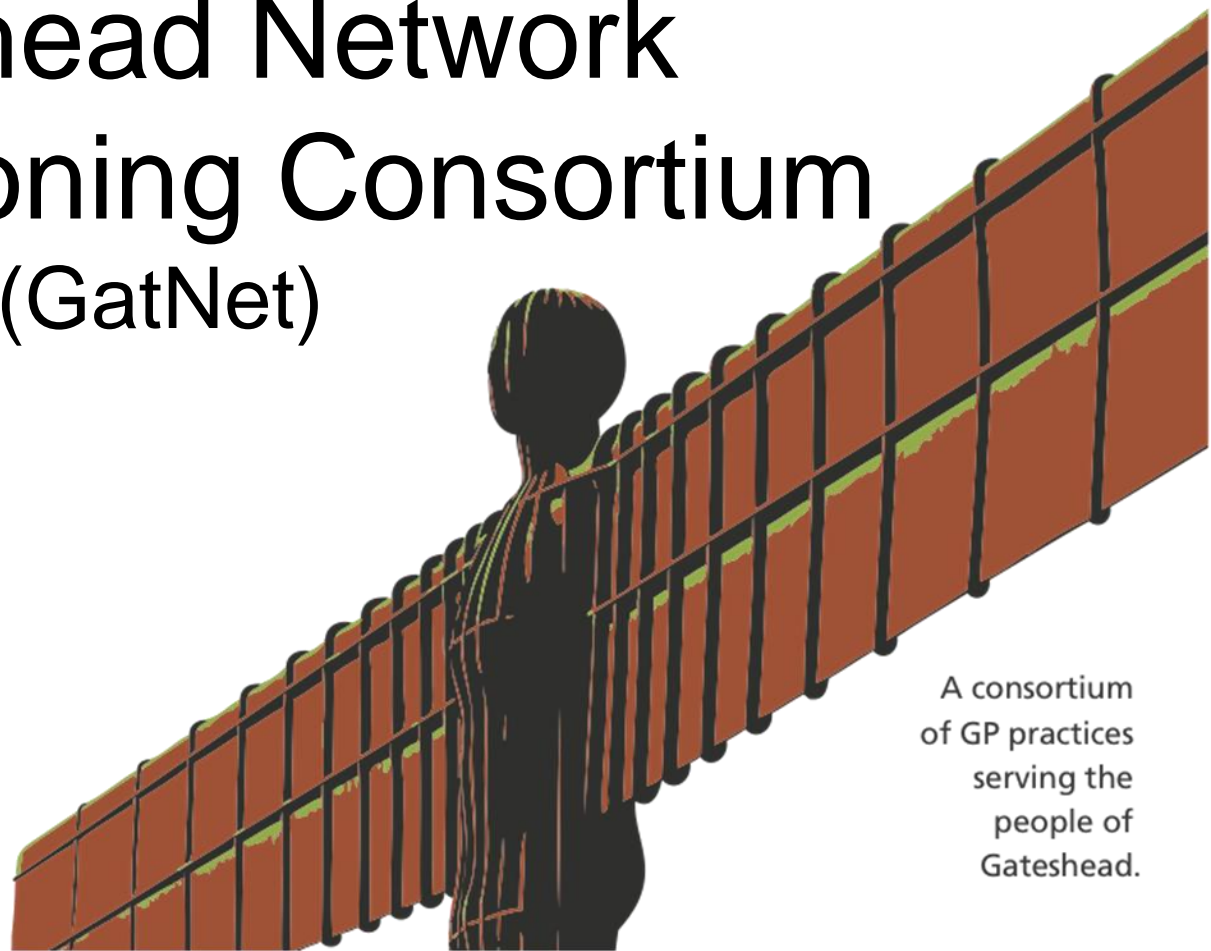


Gateshead Network Commissioning Consortium (GatNet)



A consortium
of GP practices
serving the
people of
Gateshead.

Who / what are GatNet ?

- A network of all the GP practices in Gateshead working together to ensure the very best health care is provided for people in Gateshead in the community, in Hospital and in GP surgeries ensuring the NHS budget is spent on the things that matter



Objectives

- Improve the coordination, quality and delivery of healthcare in Gateshead
- Building on the success of Practice Based Commissioning
- Ensure authorisation of Gateshead Network Commissioning Consortium



Success to date

- New community intravenous antibiotics pathway for cellulitis
- New community physiotherapy pathway
- Introduction of an intermediate musculoskeletal pathway
- Nursing home pilot



Work currently underway

- Development of intermediate dermatology service
- Improving care for patients with diabetes
- Redesigning the COPD pathway
- Implementing the GRASP AF tool in practices to improve stroke prevention
- Improving access to 24 hour blood pressure monitoring

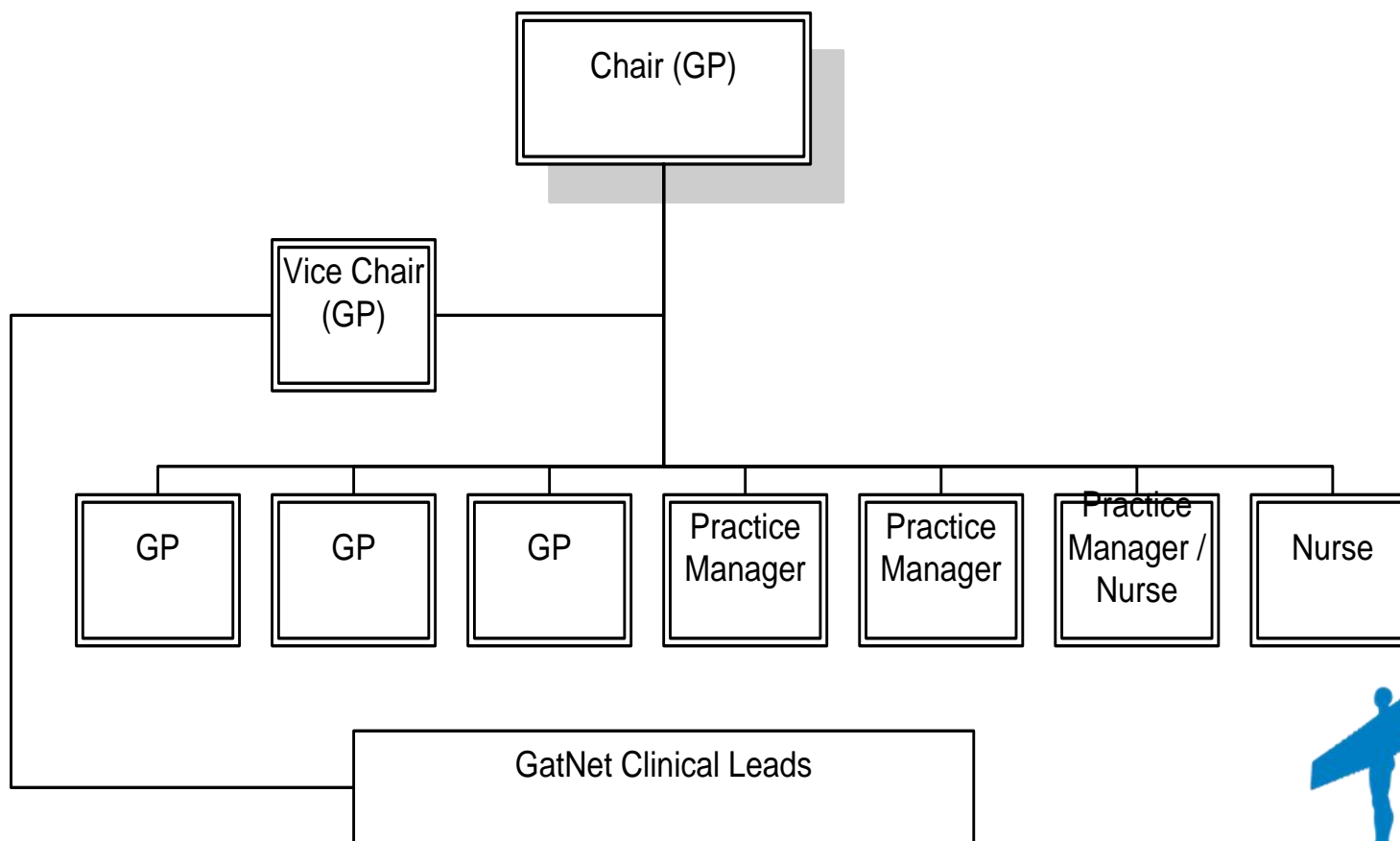


Governance & Accountability

- Gateshead Network Commissioning Consortium, a committee of Gateshead PCT Board with delegated responsibilities
- Comprises Elected Board + PCT Directors of Finance, Commissioning & Public Health, + PCT Non Executive Director



ELECTED BOARD STRUCTURE



Who is GatNet? Your new board – GP's



Gateshead Network
Commissioning Consortium

Chair – **Mark Dornan**



Vice Chair – **Steve Kirk**



Who is GatNet?

Your new board – GP's

Prescribing Lead –
Chris Jewitt



Urgent Care Lead –
Gordon Orritt



Maintaining Good Medical
Practice Lead – **Neil Morris**



Who is GatNet?

Your new board – Practice Managers

Gateshead Network
Commissioning Consortium

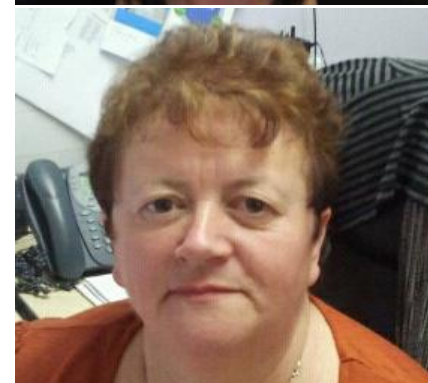
Lead for Communications

Susan Sohi



Lead for Practice Development

Val Hempsey



Lead for Quality and Public
Involvement

Sheinaz Stansfield



Who is GatNet? Your new board



Gateshead Network
Commissioning Consortium

Lead for Nursing
Deborah Dews



Non Executive Director
Tim Morgan



Who is GatNet? Your new board

Gateshead Network
Commissioning Consortium

Finance Director
Chris Macklin



Executive Director
David Hambleton



Director of Public Health
Alyson Learmonth



Opportunity to join things up

- More clinical engagement
- Promoting joined up commissioning of health, health improvement and social services
- Patient voice central



Joining it up through locality working

- 5 localities reflect area forums:
 - Practice engagement
 - Peer review
 - Health inequalities
 - Link teams together
 - Identify priorities for commissioning



Joining it up through working with the Local Authority

- Joint Strategic Needs Assessment
- Health & Wellbeing Board
- Local Area Forums
- Joint Commissioning Group



Joining it up through working with patients & the public



LEVEL	PATIENT AND PUBLIC ENGAGEMENT
ONE	<p>CORPORATE/ BOARD</p> <p>A practice manager will be voted onto the board to lead and champion PPI champion to assure the board of an effective framework at four levels.</p> <p>Local Engagement Board (LEBs) will be one of many mechanisms used by GatNet to engage patients and the public. Patients and the public will be central to developing more patient involvement structures</p> <p>Patient User, Carer and Public Involvement will be strengthened to support the work of GatNet and will be robust and transparent.</p>
TWO	<p>CLINIC/PATHWAY</p> <p>Strategic/Clinical Leads ensure appropriate engagement mechanisms are in place to involve patients in the reviewing of current services and the development of new services.</p>
THREE	<p>GP PRACTICES</p> <p>Every Practice will have a Patient Reference Group (PRG) comprising of registered patients. The PRG will be representative of its registered patients. GP's and PRG will agree priority issues to be included in a local survey. The PRG will be informed of the findings with an opportunity to discuss findings.</p> <p>A copy of the Local Patient Participation Report (LPP report) will be produced and will be available to the public.</p> <p>All GP practices will have a website.</p>
FOUR	<p>COMMUNITY ENGAGEMENT</p> <p>Links with and a mechanism to feed into LPP will be established with;</p> <ul style="list-style-type: none"> The five local authority neighbourhood management area teams Promoting Health Engagement Team Community Volunteers Health Champions Community groups Residents associations

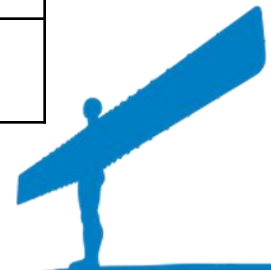
Joining it up with the clinical community

- Time in Time outs
- Joint clinical forum
- Locality groups
- Clinical Board & sub groups



Joining it up with the PCT.....

Programme	GP Lead	Programme Lead	Management Support
Staying Healthy			
➤ Obesity	Steve Kirk	Amanda Healy	Ben Seal
➤ Smoking	Steve Kirk	Amanda Healy	Catherine Scott
➤ Alcohol	Steve Kirk	Amanda Healy	Ben Seal
➤ Sexual Health	Heather Gallagher	Amanda Healy	Janice Chandler
➤ NHS Health Checks	Steve Kirk	Amanda Healy	Ben Seal
Child Health	Jonathan Harness	Lisa Dodd	Lisa Dodd
Maternity	Heather Gallagher	Alice Wiseman	Lisa Dodd
Sick and Injured Child	Jonathan Harness	Lucy Topping	Ruth Frostwick



Joining it up with the PCT.....

Long Term Conditions			
➤ COPD	Gordon Orritt	Ailsa Nokes	Jackie Gray / Mandy Mitchinson
➤ Diabetes	Helen Ramsey	Ailsa Nokes	Amanda Healey / Sam Hood
➤ CVD	Steve Kirk	Ailsa Nokes	Hannah Jefferies



Joining it up with the PCT.....



Gateshead Network
Commissioning Consortium

Planned Care			
➤MSK	Gordon Orritt	Shelia Cooper	Helen Steadman
➤Dermatology	Raph Mohammed	Shelia Cooper	Helen Steadman
➤Diagnostics/OPT		Shelia Cooper	Gillian De'Ath
Cancer	Joan Bryson	Shelia Cooper	
End of Life	Joan Bryson	Shelia Cooper	
Mental health	Matthew Robinson	Ian Holiday	
➤Dementia	Ola Dafe	Ian Holiday	Wendy Kaiser
CAMHS		Jeanette Sherratt	



Joining up with the PCT..... Pathfinder

- Urgent Care – to work with partner agencies to reduce unnecessary emergency admissions to hospital and ensure patients are seen in the most appropriate place for them
- Maintaining Good Medical Practice – to ensure the quality of primary care is raised to the best possible standard
- Prescribing – to work with general practices to ensure all patients across Gateshead have access to up to date and rational prescribing, backed up by current guidelines



Next steps

- Drive improvements in patient care through commissioning
- Authorisation
- Continue to build relationships with our key stakeholders
- Continue to listen to what our patients are telling us

